

Panic Device Accessories

Lever Keyed Locks

Series LL520 lever keyed locks, in dull chrome, are available for the UL520 UL523, UL524, UL 525, UL 526 and 520V panic exit devices. Fits a standard ANSI #161 cutout.



Product Number	Description
----------------	-------------

Entry Lever Trim

LL520 DCH.....	Dull Chrome Finish
LL520 PB	Polished Brass Finish
LL520 DCHIC*	Accepts IC Core Dull Chrome Finish
LL520 DUR.....	Duranodic Finish
LL520 SB	Satin Brass Finish
CSLL520DCH.....	Lever Trim w/Clutch

Solid Spindle Tailpiece

SLL520DCH	Lever Trim
SLL520DCHKU.....	Lever Trim
SLL520DCHKW.....	Lever Trim
SLL520DCHKX.....	Lever Trim
SLL520DCHKY.....	Lever Trim
SLL520DCHKZ.....	Lever Trim
RLL520DCH	SR Trim Style

Pull x Escutcheon Trim

Interchangeable core prep available

EP520DCH	Dull Chrome Finish With Cylinder
EP520DCHLC.....	Dull Chrome Finish Less Cylinder

Product Number	Description
----------------	-------------

Storeroom Lever Trim

DLL520 DCH	Dull Chrome Finish
DLL520 DCHIC*	Accepts IC Core Dull Chrome Finish
DLL520 SB	Satin Brass Finish
RDLL520DCH.....	Polished Brass Finish
*Interchangeable core prep available	
*Core available See page 46	

Passage Lever Trim

NLL520 DCH	Dull Chrome Finish
NLL520DUR	Duranodic Finish
NL61DCH	Dull Chrome for UL523/UL 524
SNLL520DCH.....	Lever Trim w/Solid Spindle Passage Function

Parts

520 Plate	Backplate for KL520
520 Strike	Strike for UL520
520 VRC	Rod with Covers for 12' Door
523 Plate	Ansi Cylinder Plate for UL523

Ball Knob Keyed Locks

Series KL520 ball knob keyed locks for the UL520, UL523, UL524, and 520V panic devices are available from stock keyed differently or alike, and come in stainless steel material. It fits a standard ANSI #161 Door Prep.



Product Number	Description
----------------	-------------

Entry/Classroom

KL520 SS	Stainless Steel Keyed Different
KL520 SSKA	Stainless Steel Keyed Alike

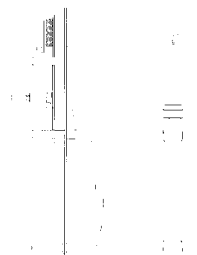
Storeroom

DKL520SS.....	Stainless Steel Keyed Different
---------------	---------------------------------

Thumbpiece Trim x Escutcheon

Product #	Description
-----------	-------------

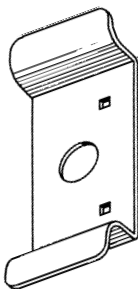
TP520ALL*	Thumbpiece Trim Aluminum LH
TP520ALL*	Thumbpiece Trim Aluminum RH
TP520DURL*	Thumbpiece Trim Duranodic LH
TP520DURR*	Thumbpiece Trim Duranodic RH



*Interchangeable core prep available – Core available see complete catalog. Handed – not field changeable.

Door Pull

The PC510 door pull has a cylinder hole, and fits any exit device. It comes in two finishes, aluminum and duranodic. The door pull covers a pre-existing ANSI #161 prepared door.

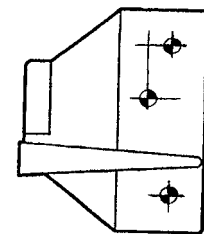


Product Number	Description
----------------	-------------

PC510 AL.....	Aluminum Finish
PC510 DUR.....	Duranodic Finish

Overlapping Strike

The overlapping strike for panic devices is used with a pair of doors, and is of zinc plated wrought steel.



Product Number	Description
----------------	-------------

OS508	Zinc Plated For UL520/UL525/UL526
OSAL3	Zinc Plated For UL523/524