

SC70 Series



Falcon SC70 Series heavy duty closers are built for applications that demand reliable door control and easy maintenance. The SC70 Series closers are ANSI grade 1, ADA compliant and deliver tough performance. Choose the SC70 for interior or exterior doors in retail shops, restaurants, small offices and many other high traffic applications.

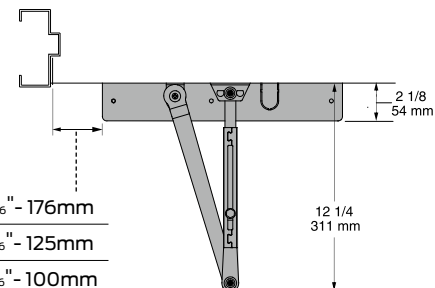
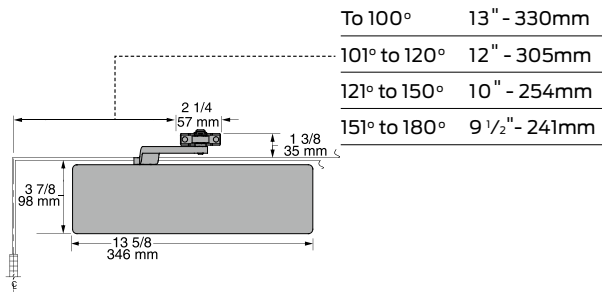
Standard features

- Meets ANSI A117.1
- ANSI/BHMA A156.4, grade 1
- UL listed
- 1 1/2" diameter piston
- Closer mounts hinge side, top jamb or parallel arm when either the RW/PA or HW/PA arm is specified.
- Adjustable sizes 1-6
- Single piece cast aluminum body
- Staked valves
- Non-handed for left or right swinging doors
- Fast and easy installation
- Separate adjustable general speed, latch speed and backcheck
- Heat-treated forged steel piston
- Double heat-treated pinion
- Cover is high-impact UL listed fire retardant plastic that meets UL 10C and UBC 7-2 (1997) fire test
- UL 10C approved fluid
- Universal screw pack for aluminum, hollow metal and wood doors
- 10-year warranty

Listings and certifications

The Falcon SC71 is UL approved and compliant with the UL 10C and UBC 7-2 (1997) fire test. Additionally, the SC71 is rated ANSI/BHMA A156.4, grade 1 and designed to meet the American Disabilities Act (ADA) and ANSI A117.1

SC70 Series hinge (pull side)



Butt hinges should not exceed 5" (127mm) in width.

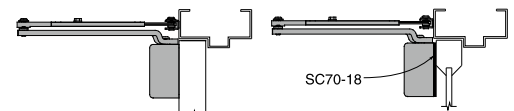
Auxiliary stop is recommended at hold-open point or where a door cannot swing 180°.

Reveal should not exceed 3/4" (19mm) for regular arm or hold-open arm.

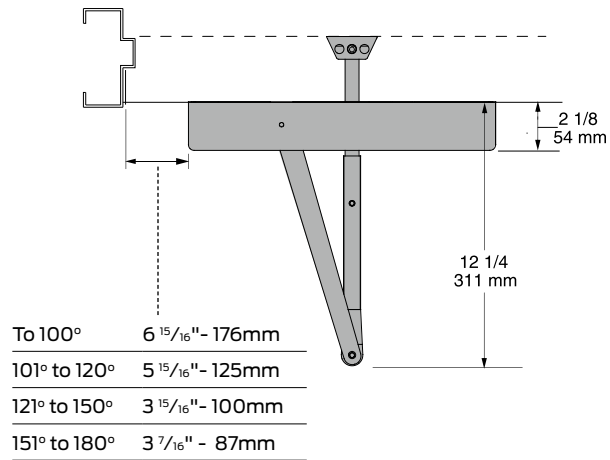
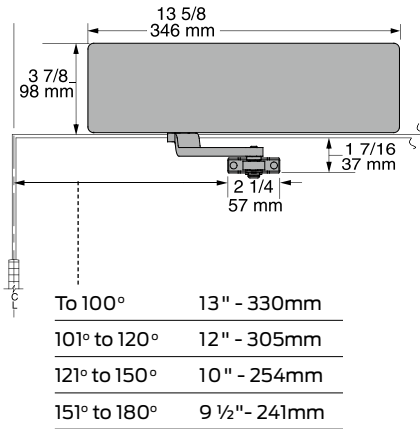
Top rail less than 3 7/8" (98mm) requires plate SC70-18.

Clearance of 2 1/8" (54mm) behind door required for 90° installation.

Delayed action add suffix "DEL" to selected cylinder (ex. SC70 DEL). Delays closing from maximum opening to approx. 70° with adjustable delay time.



SC70 Series top jamb (push side)



Butt hinges should not exceed 5" (127mm) in width.

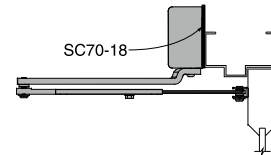
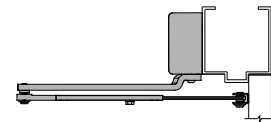
Auxiliary stop is recommended at hold-open point or where a door cannot swing 180°

Reveal should not exceed 3 1/4" (83mm) for regular arm or hold-open arm.

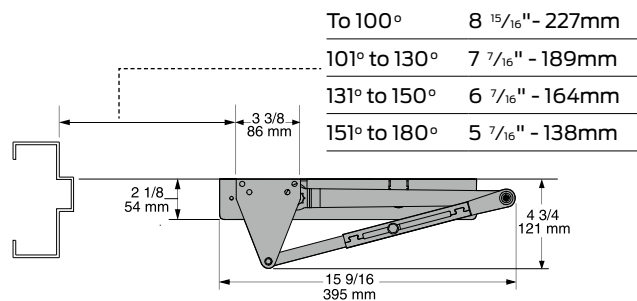
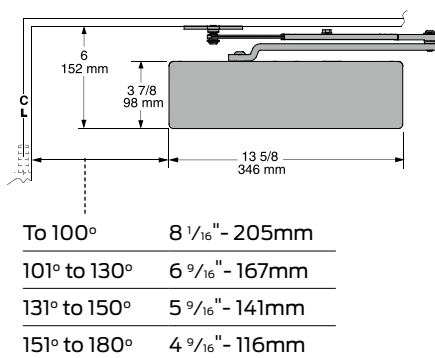
Top rail of 1 1/2" (38mm) required.

Head frame less than 3 7/8" (98mm) requires plate SC70-18.

Delayed action add suffix "DEL" to selected cylinder (ex. SC70 DEL). Delays closing from maximum opening to approx. 70°, with adjustable delay time.



SC70 Series parallel (push side)

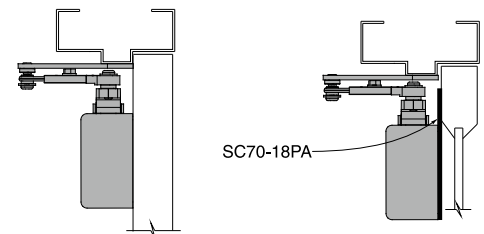


Butt hinges should not exceed 5" (127mm) in width.

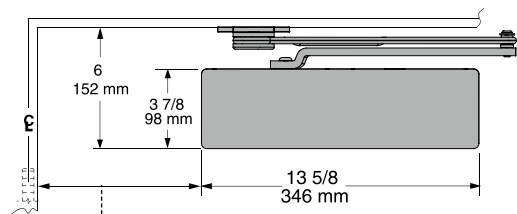
Auxiliary stop is recommended at hold-open point or where a door cannot swing 180°

Top rail less than 6" (152mm) measured from stop requires plate SC70-18PA.

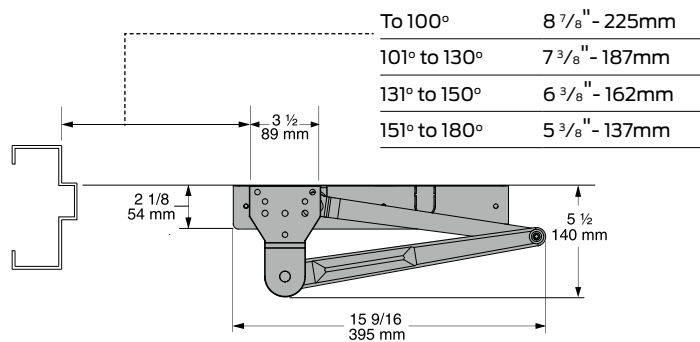
Delayed action add suffix "DEL" to selected cylinder (ex. SC70 DEL). Delays closing from maximum opening to approx. 70°, with adjustable delay time.



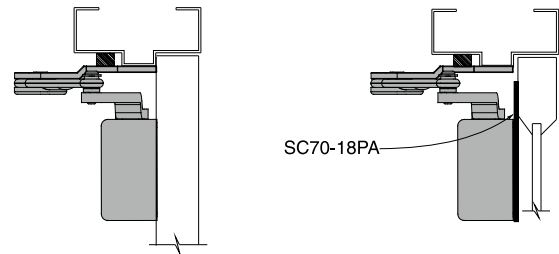
SC70 Series heavy duty (parallel)



To 100°	8 1/16" - 205mm
101° to 130°	6 9/16" - 167mm
131° to 150°	5 9/16" - 141mm
151° to 180°	4 9/16" - 116mm



To 100°	8 7/8" - 225mm
101° to 130°	7 3/8" - 187mm
131° to 150°	6 3/8" - 162mm
151° to 180°	5 3/8" - 137mm



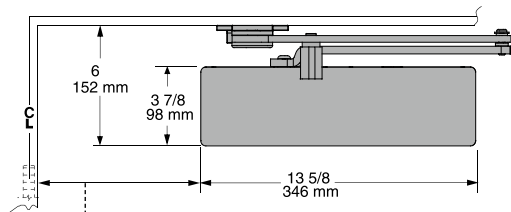
Butt hinges should not exceed 5" (127mm) in width.

Auxiliary stop is recommended at hold-open point, where a door cannot swing 180°, or where dead stop or spring-n-stop arm is not used.

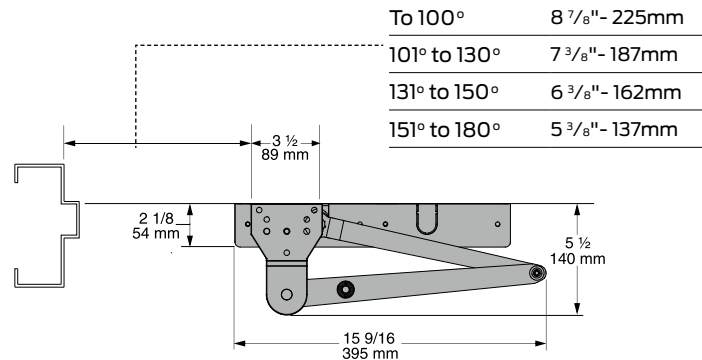
Top rail less than 6" (152mm) measured from stop requires plate SC70-18PA.

Delayed action add suffix "DEL" to selected cylinder (ex. SC70 DEL). Delays closing from maximum opening to approx. 70°, with adjustable delay time.

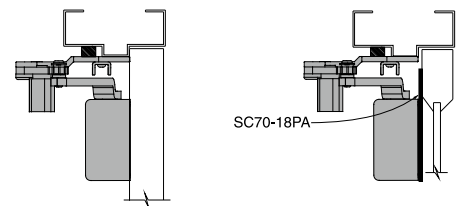
SC70 Series dead stop HO (parallel)



To 100°	8 1/16" - 205mm
101° to 130°	6 9/16" - 167mm
131° to 150°	5 9/16" - 141mm
151° to 180°	4 9/16" - 116mm



To 100°	8 7/8" - 225mm
101° to 130°	7 3/8" - 187mm
131° to 150°	6 3/8" - 162mm
151° to 180°	5 3/8" - 137mm

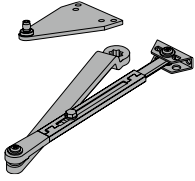


Butt hinges should not exceed 5" (127mm) in width.

Top rail less than 6" (152mm) measured from stop requires plate SC70-18PA.

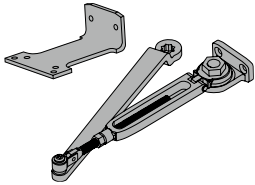
Delayed action add suffix "DEL" to selected cylinder (ex. SC70 DEL). Delays closing from maximum opening to approx. 70°, with adjustable delay time.

Arm types All SC70 Series closers come with full cover, standard arm and screw pack.



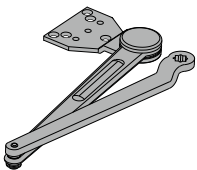
Regular arm, SC70-3077PA

Non-handed arm with adjustable forearm assembly to accommodate a range of doors and frame reveal conditions. Mounts hinge side, top jamb or parallel arm. PA shoe included to allow installation in a parallel arm configuration.



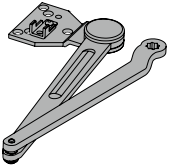
Hold-open arm, SC70-3049PA

Optional, non-handed, hold open arm with adjustable forearm assembly to accommodate a range of doors and frame reveal conditions. Mounts hinge side, top jamb or parallel arm. PA shoe included to allow installation in a parallel arm configuration.



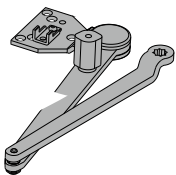
Heavy duty regular arm, SC70-3077HD

Optional, non-handed, stamped, heavy duty, parallel arm for use in high-traffic applications.



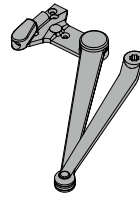
Dead stop arm, SC70-3077DS

Optional, non-handed, stamped, heavy duty, parallel arm includes a positive mechanical stop and non-adjustable forearm assembly for high volume traffic or potentially abusive installation conditions.



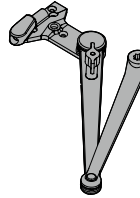
Dead stop hold-open arm, SC70-3049DS

Optional, non-handed, stamped, heavy duty, hold-open parallel arm includes a positive mechanical stop and non-adjustable forearm assembly for high volume traffic or potentially abusive installation conditions. Also includes a manually selective hold-open function.



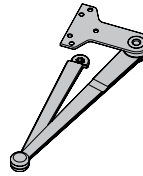
Spring-n-stop arm, SC70-3077SS

Optional, non-handed, extra heavy-duty, forged parallel arm includes an integral spring stop and non-adjustable forearm assembly for high volume traffic or potentially abusive installation conditions.



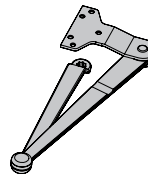
Spring-n-stop hold-open arm, SC70-3049SS

Optional, non-handed, extra heavy-duty, forged parallel arm includes an integral spring stop and non-adjustable forearm assembly for high volume traffic or potentially abusive installation conditions. Also includes a manually selective hold-open function.



Forged arm, SC70-3077FA

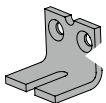
Optional, non-handed, extra heavy-duty arm with parallel arm bracket. Includes a forged steel main arm and forearm for maximum durability in high traffic and/or abusive applications. Parallel Arm (PA) bracket is a permanent feature, installation on "push" side of the door in a parallel arm type configuration is required.



Forged arm with hold open, SC70-3049FA

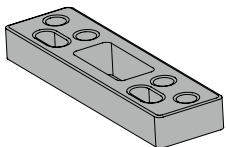
Optional, non-handed, extra heavy-duty arm with parallel arm bracket that incorporates a hold open feature. Includes a forged steel main arm and forearm for maximum durability in high traffic and/or abusive applications. Parallel Arm (PA) bracket is a permanent feature, installation on "push" side of the door in a parallel arm type configuration is required.

Installation accessories



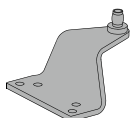
Soffit shoe support, SC70-30

Provides anchorage for fifth screw used with soffit shoe, where reveal is less than 3 1/16" (78mm).



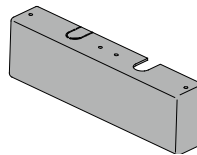
Blade stop spacer, SC70-61

Required to lower parallel arm shoe to clear 1/2" (13mm) blade stop.



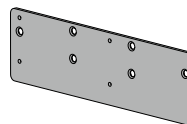
Auxiliary shoe, SC70-62A

Requires a top rail of 7" (178mm). Optional shoe replaces PA shoe for parallel arm mounting of regular arm with overhead holder/stop.



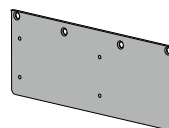
Cover, SC70-72

Standard, non-handed, full plastic cover encloses the closer body.



Plate, SC70-18

Required for hinge side mount where top rail is less than 3 7/8" (98mm). Required for top jamb mounting where head frame is less than 3 7/8" (98mm).



Plate, SC70-18PA

Required for parallel arm mounting where top rail is less than 6" (152 mm), measured from the stop. Plate requires 1 3/4" (44mm) minimum top rail measured from stop.